

2024 SC-DMAP

Executive Summary of the SC-DMAP

This document serves as a condensed version of the 90-page Strategic Coastal and Maritime Area Plan (SC-DMAP) published by the Department of Environment, Climate, and Communications on May 4, 2024. It provides a strategic planning framework for offshore renewable energy projects in the southeastern and southern waters of Ireland.

The Department has identified four maritime areas—A, B, C, and D—for development within the next decade. Area A, located approximately 12.4 km from the Copper Coast in County Waterford, is targeted for development by 2030. This area if successfully auctioned and developed, could host approx. 60 no. 15 MW wind turbines, contributing 900 MW towards the total capacity.

Collectively, the four maritime areas aim for a total installed capacity of 5 GW. Upon full development, this capacity would support approximately 330 no. 15 MW wind turbines across all designated areas.

We invite stakeholders and the public to review this summary and participate in the ongoing public consultation process. Your feedback is crucial to the development and environmental stewardship of our maritime resources.

The Dungarvan & West Waterford Chamber of Commerce values your input. Please share your opinions or concerns, as your voice is essential in shaping this initiative. You may send your thoughts to the Chamber President at president@dungarvanchamber.ie by May 24th.

Alternatively, we encourage all to get actively involved in the public consultation as outlined on the last page of this document.

Q: What is the SC-DMAP?

The SC-DMAP, or South Coast - Maritime Area Plan, is a draft plan that has been prepared for the South Coast of Ireland to guide the sustainable development and growth of the maritime and coastal economies in that region. It aims to provide a framework for the management and utilization of the marine and coastal resources in a sustainable manner. The SC-DMAP focuses on various aspects such as the marine environment and biodiversity, offshore wind development, economic and employment growth potential, coexistence with different sectors and activities, community engagement, and implementation and monitoring. It is a strategic plan that provides a roadmap for future offshore renewable energy (ORE) developments, including offshore wind projects, in the South Coast area. The plan sets out policy objectives, measures, and guidelines to ensure that ORE projects are developed in a manner that is environmentally sustainable, economically viable, and socially beneficial. The SC-DMAP is aligned with national and international policies and guidelines and emphasizes the importance of stakeholder consultation and public engagement throughout the preparation and implementation process.

The publication of this SC-DMAP starts six weeks of public consultation, the government want to have the DMAP published and legislation for by August.

Q: How will it affect me in Co. Waterford?

The draft SC-DMAP identifies four Maritime Areas for proposed future deployments of both grid connected and non-grid connected ORE.

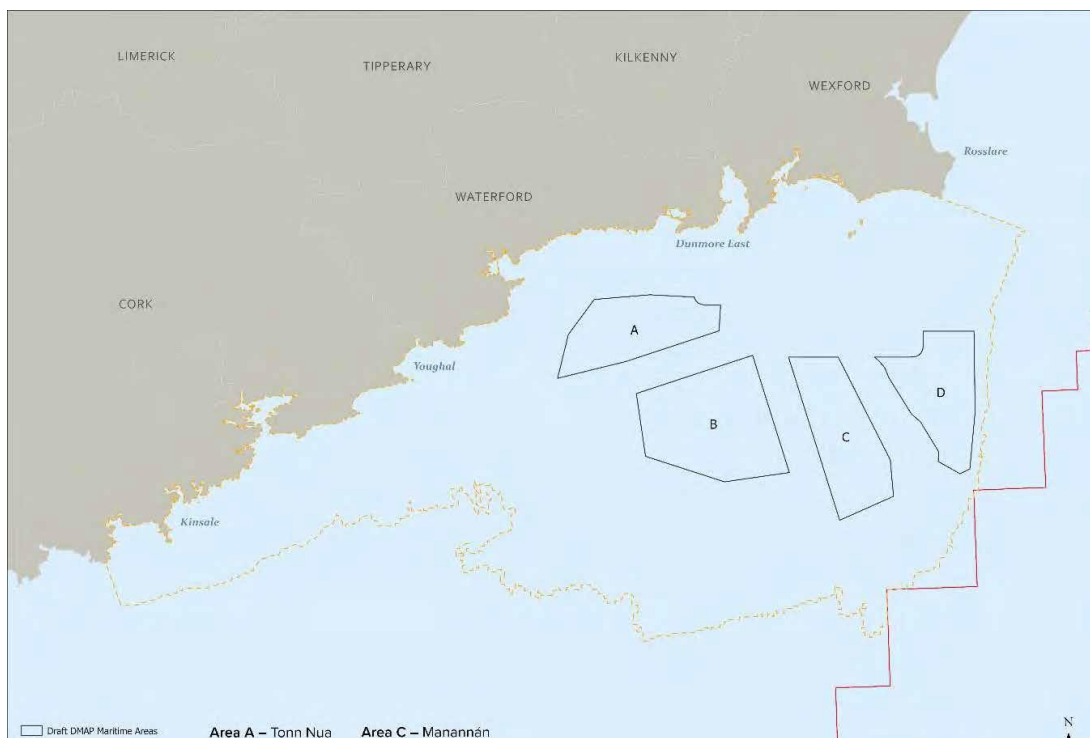


Figure 1: SC-DMAP maritime areas.

While a development within Maritime Area A will aim to deploy by 2030 or as soon as feasible thereafter, subject to all necessary project level assessments and consents, further subsequent programmes of deployment will take place within Maritime Areas B, C and D area over the next approximate ten-year period through an orderly, strategic and managed process of development.

The Government through this SC-DMAP document have proposed that the overall Four maritime locations will have an installed capacity of 5GW (approx. 330 no. 15MW Wind-turbines) developed over a Ten year period. With Maritime area “A” having a proposed installed capacity of 900MW (approx. 60no. 15MW wind turbines)

Q: So Maritime Area “A” will be developed first, how close to shore could the turbines be?

The document does not explicitly state how close to shore the turbines could be. However, it does mention that Maritime area A is situated off the coast of County Waterford and encompasses a total marine area of 312.6 kilometres (km)². The distance to shore varies from between 12.2 km along the western boundary to 12.4 km along the northern boundary.

This would mean in theory that if the current SC-DMAP was approved and developers could install wind turbines as close as 12km to the copper coast.

Q: How big will these turbines be?

Based on general knowledge, the size of offshore wind turbines can vary depending on technological advancements and project specifications. Modern offshore wind turbines typically have rotor diameters ranging from 100 to 200 meters and can reach heights of over 200 meters. The capacity of offshore wind turbines can also vary, with larger turbines having capacities of several megawatts.

It is important to note that the specific size of the turbines to be used in the SC-DMAP area would depend on various factors, including technological advancements, project requirements, and environmental considerations. Detailed specifications would be determined during the planning and development stages of specific offshore wind projects in the SC-DMAP area.

This being said it has been mentioned that the turbines could be >13mW, these turbines would be in the region of approx. 220-meter high and host a blade size of over 100m.

Q: How many turbines are proposed for Maritime area “A”

The SC-DMAP states that “Subject to project level environmental assessment, and future MAC awards and development permissions by relevant competent authorities, it is intended that a fixed offshore wind deployment within Area A will have an installed capacity of approximately 900 MW”

This would mean a developer could install 69 no. 13mMW wind turbines or approx. 60 no. 15MW wind turbines in Maritime area “A”

Q: Could I see these turbines 12.5km out to see if I was on the beach?

Yes, a study released by the Welsh government in 2019 (2019 Wales Seascape and visual sensitivity study (source)) would have 200m wind turbines within 12kM from shore has being “above medium impact”



Figure 2 170m wind turbines, 8km from shore.

Q: How can I get involved and have my say?

The Department of the Environment, Climate Communications has opened a six-week statutory public consultation period on the draft South Coast Designated Maritime Area Plan (DMAP) for Offshore Renewable Energy.

A number of in-person public engagement events will be taking place across counties Wexford, Waterford and Cork.

Details on these public information events are available [here](#).

These drop-in events are open to the general public but registration is required to attend three panel discussions taking place in Wexford, Waterford and Cork.

**Waterford City & County Council,
City Hall, The Mall, Waterford City**

15 May 2024

6pm – 7:30pm

You register for the Waterford panel discussions [here](#).

Cork County Council, County Hall, Cork City

16 May 2024

6pm – 7:30pm

You register for the Cork panel discussions [here](#).

Wexford County Council, County Hall, Wexford Town

22 May 2024

6pm – 7:30pm

You register for the Wexford panel discussions [here](#).

The Dungarvan & West Waterford Chamber values your input on this project. Whether you have opinions or concerns, your voice matters, the D&WW Chamber is committed to representing its members. Share your thoughts, please email to president@dungarvanchamber.ie by May 24th.